



## PRODUCT DATA SHEET

**AIRSTOP DIVA+ Vapour Retarder fabric-reinforced**

Is a moisture-variable vapour retarder for use in the air-tight layer. The functional membrane changes its diffusion resistance depending on the current humidity. During the winter months room atmosphere is generally dryer. The sd-value of the vapour retarder increases. This process results in the penetration of only a little water vapour into the construction and/or into the insulation. In summer, when there is sufficient solar insolation, the relative humidity behind the membrane is higher as a result of reverse diffusion. The water molecules are stored in the membrane. The sd-value sinks, causing more water vapour to escape from the construction and into the rooms and the building element becomes dryer.

**FIELD OF APPLICATION**

- flat roofs
- construction components with permeable and impermeable outer shell in new constructions and refurbishment
- for wall, ceiling and roof

**ADVANTAGES**

- transparent
- moisture-variable with a very high sd-value range
- printed cutting line
- tear resistant

**RECOMMENDED PRODUCTS**

AIRSTOP ELASTO Adhesive Tape



AIRSTOP SPRINT Sealant



AIRSTOP FROZEN Adhesive Paste



AIRSTOP KB Adhesive Tape



AIRSTOP SOLO Adhesive Tape



AIRSTOP FLEX Adhesive Tape

**AVAILABLE IN THE FOLLOWING DIMENSIONS**

Roll width	1,5 m	3 m
Roll length	50 m	50 m
Roll area	75 m <sup>2</sup>	150 m <sup>2</sup>
Roll weight	8,7 kg	

**PRODUCT DATA (EN 13984)**

Material composition	Non-woven composite made from polymers with filament reinforcement	
Colour	Transparent white with blue print	
Weight EN 1849-2	110 g/m <sup>2</sup> (± 5 %)	
sd-value EN ISO 12572	0,5 - 30 m	
Temperature resistance	-40 °C - 80 °C	
Expandability EN 12311-2	20 %	20 %
Tensile strength EN 12311-2	350 (± 20) N / 50 mm	315 (± 20) N / 50 mm
Tear propagation resistance EN 12310-1	350 N (-25 / +35)	375 N (-25 / +35)
Storage	cool and dry	

# AIRSTOP DIVA+ Vapour Retarder fabric-reinforced

## INFO

Vapour barriers can be used with wall, roof and ceiling construction elements as an airtight layer and as a vapour retarding layer.

### (1) MECHANICAL ATTACHMENT OF THE VAPOUR BARRIER

The vapour barrier is usually attached transverse to the position of the rafters, joists or beams with the smooth and/or printed side facing the installer. The lengths are fixed mechanically to the construction's wood with approx. 10cm overlap using tacking staples. For metal C-studs a temporary attachment using double-sided adhesive tape or even a spray-on contact adhesive is a possibility.

### (2) AIRTIGHT ADHESION

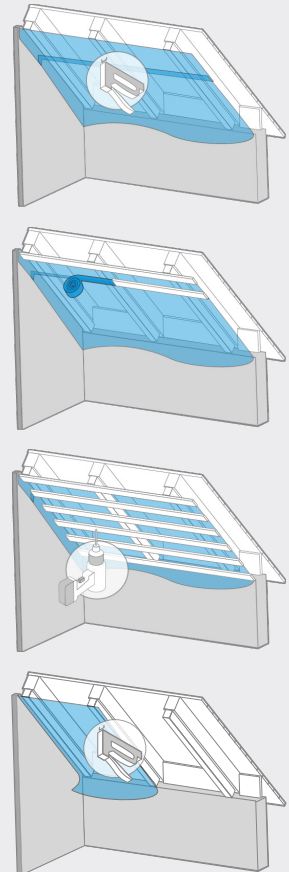
Airtight adhesion of the joints, connections and penetration points must be carried out using the AIRSTOP Adhesion system.

### (3) TRANSVERSE LATHING / MOUNTED AT INTERVALS

The laths underneath the vapour barrier have to be mounted before the cellulose is blown in. The centre distance shall be less than  $\leq 30$  cm. The joints of the vapour barrier also have to be covered by an additional lath. Glued connections and joints that were under tension have to be mechanically secured. The membrane has to be applied without tension.

### (4) LONGITUDINAL LATHING

When no transverse lathing is used, e.g. if formwork is installed on longitudinal lathing, the vapour barrier must be placed parallel to the rafters or to the construction. The joints must lie on the wood of the construction and be stapled overlapping and sealed using AIRSTOP adhesive tape. Before the insulation is blown in the longitudinal lathing must be mounted to provide mechanical relief of the joints.



#### ISOCELL GmbH & Co KG

Gewerbestraße 9  
5202 NEUMARKT AM WALLERSEE | Österreich  
Tel.: +43 6216 4108  
office@isocell.at

#### ISOCELL SCHWEIZ AG

Herbergstrasse 29  
9524 ZUZWIL | Suisse /Schweiz  
Tel.: +41 71 940 06 72  
office@isocell.ch

#### ISOCELL FRANCE

170 Rue Jean Monnet | ZAC de Prat Pip Sud  
29490 GUIPAVAS | France  
Tél.: +33 2 98 42 11 00  
contact@isocell-france.fr

#### ISOCELL BUREEL BELGIË

Außenborner Weg 1 | Schoppen  
4770 AMEL | Belgique  
Tel.: +32 80 39 90 58  
office@isocell.be

#### ISOCELL Sverige AB

Torshamnsgatan 35  
164 40 KISTA | Sverige  
Tel.: +46 10 130 25 00  
info@isocell.se

**ISOCELL**  
www.isocell.com